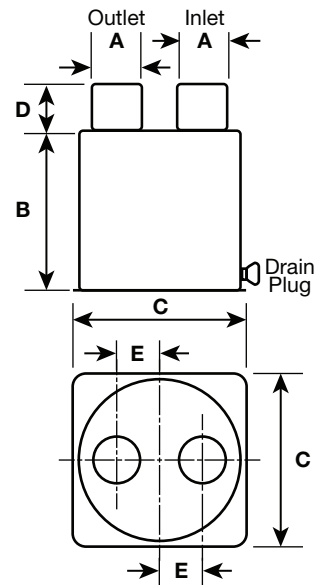


Lift Silencers - Top In Top Out



| Lift Silencers - Top In Top Out | | | | | | | | |
|---------------------------------|-----------|------|-----|-----|-----|-----|-----|-----------|
| Part No. | Reference | A | | B | C | D | E | Weight kg |
| | | inch | mm | mm | mm | mm | mm | |
| H001671 | HTT005 | 1.5 | 38 | 158 | 200 | 50 | 44 | 1.5 |
| H001673 | HTT025 | 1.6 | 41 | 158 | 200 | 50 | 44 | 1.5 |
| H001674 | HTT030 | 1.6 | 41 | 230 | 200 | 53 | 44 | 1.9 |
| H001675 | HTT040 | 1.77 | 45 | 158 | 200 | 50 | 44 | 1.5 |
| H001676 | HTT045 | 1.77 | 45 | 230 | 200 | 50 | 44 | 1.9 |
| H001677 | HTT055 | 2 | 51 | 158 | 200 | 72 | 44 | 1.6 |
| H001678 | HTT065 | 2 | 51 | 255 | 275 | 51 | 68 | 3.3 |
| H001679 | HTT070 | 2 | 51 | 305 | 324 | 80 | 84 | 4.9 |
| H001680 | HTT085 | 2.36 | 60 | 255 | 275 | 73 | 68 | 3.5 |
| H001681 | HTT090 | 2.5 | 63 | 255 | 275 | 64 | 68 | 3.5 |
| H001682 | HTT110 | 3 | 76 | 255 | 275 | 76 | 68 | 3.7 |
| H001683 | HTT115 | 3.5 | 89 | 305 | 324 | 90 | 84 | 5.6 |
| H001684 | HTT120 | 4 | 102 | 305 | 324 | 102 | 70 | 5.6 |
| H001685 | HTT125 | 5 | 127 | 370 | 446 | 128 | 83 | 10.4 |
| H001686 | HTT130 | 6 | 152 | 370 | 446 | 127 | 102 | 10.7 |
| H010299 | HTT135 | 8 | 203 | 521 | 548 | 201 | 122 | 17.9 |

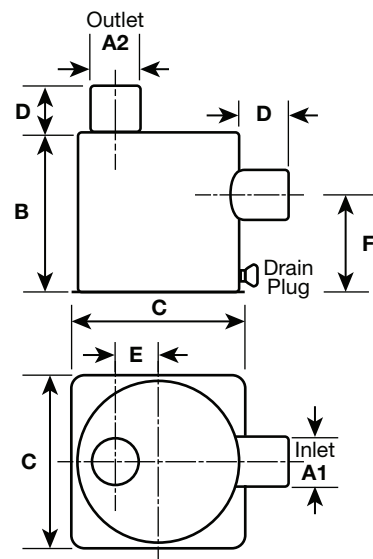


Drawings and dimensions are for guidance. Alternative sizes and configurations available on request. Reference numbers that end with B are not Lloyd's approved.

Lift Silencers - Side In Top Out



| Lift Silencers - Side In Top Out | | | | | | | | | | |
|----------------------------------|-----------|------|-----|------|-----|-----|-----|-----|-----|-----------|
| Part No. | Reference | A1 | | A2 | | B | C | D | F | Weight kg |
| | | inch | mm | inch | mm | mm | mm | mm | mm | |
| H001615 | HST005 | 1.5 | 38 | 1.5 | 38 | 169 | 200 | 38 | 95 | 1.5 |
| H001616 | HST010 | 1.5 | 38 | 1.5 | 38 | 230 | 200 | 38 | 139 | 1.8 |
| H001617 | HST025 | 1.6 | 41 | 1.6 | 41 | 169 | 200 | 38 | 95 | 2.2 |
| H001618 | HST035 | 1.6 | 41 | 1.6 | 41 | 255 | 275 | 55 | 165 | 3.3 |
| H001619 | HST055 | 1.77 | 45 | 1.77 | 45 | 230 | 200 | 50 | 139 | 1.9 |
| H009936 | HST105 | 2 | 51 | 2 | 51 | 230 | 200 | 51 | 139 | 1.9 |
| H009525 | HST110 | 2 | 51 | 2 | 51 | 255 | 275 | 51 | 165 | 3.3 |
| H001623 | HST115 | 2 | 51 | 2 | 51 | 305 | 324 | 81 | 200 | 4.9 |
| H001624 | HST145 | 2.36 | 60 | 2.36 | 60 | 305 | 324 | 75 | 200 | 5.1 |
| H001625 | HST150 | 2.36 | 60 | 2.36 | 60 | 255 | 275 | 74 | 165 | 3.5 |
| H010352 | HST165 | 2.5 | 63 | 2.5 | 64 | 255 | 275 | 64 | 165 | 3.5 |
| H009937 | HST200 | 3 | 76 | 3 | 76 | 255 | 275 | 76 | 165 | 4.4 |
| H001629 | HST205 | 3 | 76 | 3 | 76 | 305 | 324 | 100 | 184 | 6 |
| H001630 | HST210 | 3.5 | 89 | 3.5 | 89 | 305 | 324 | 90 | 184 | 5.6 |
| H001631 | HST215 | 4 | 102 | 4 | 102 | 305 | 324 | 102 | 184 | 5.6 |
| H001632 | HST220 | 5 | 127 | 5 | 127 | 370 | 446 | 102 | 222 | 10 |
| H001633 | HST225 | 5 | 127 | 5 | 127 | 343 | 342 | 114 | 219 | 6.6 |
| H001634 | HST230 | 6 | 152 | 6 | 152 | 370 | 446 | 127 | 254 | 11.4 |
| H001635 | HST235 | 6 | 152 | 8 | 203 | 370 | 446 | 152 | 222 | 12.4 |
| H001636 | HST240 | 8 | 203 | 8 | 203 | 585 | 500 | 200 | 392 | 15.6 |
| H017157 | HST250 | 10 | 254 | 10 | 254 | 576 | 635 | 250 | 400 | 30.1 |



Drawings and dimensions are for guidance. Alternative sizes and configurations available on request. Reference numbers that end with B are not Lloyd's approved.